

TANYA
ACHARYA

xtanyaacharya@gmail.com
tanyaach.github.io

Last Updated: December 30, 2023

intel portfolio

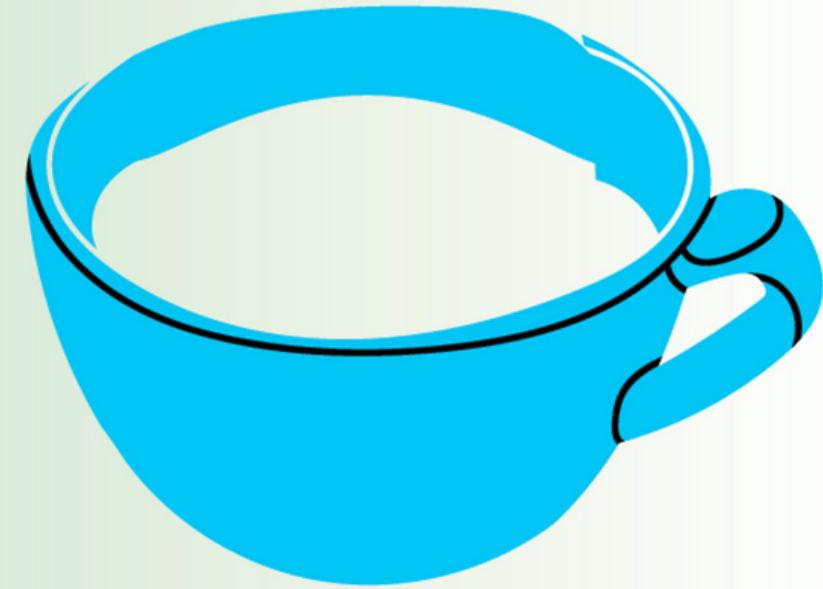


ASSET DESIGN

During the rebranding for Intel's EHS branch, I was given creative authority to use the brand colors and motifs to envision new assets for EHS websites, SharePoints, presentations, and any customer-facing products. This gave EHS its own look and feel and showcased what the brand is about.

All assets were created using Adobe Illustrator.

Communi-TEA
Chat With Patrice

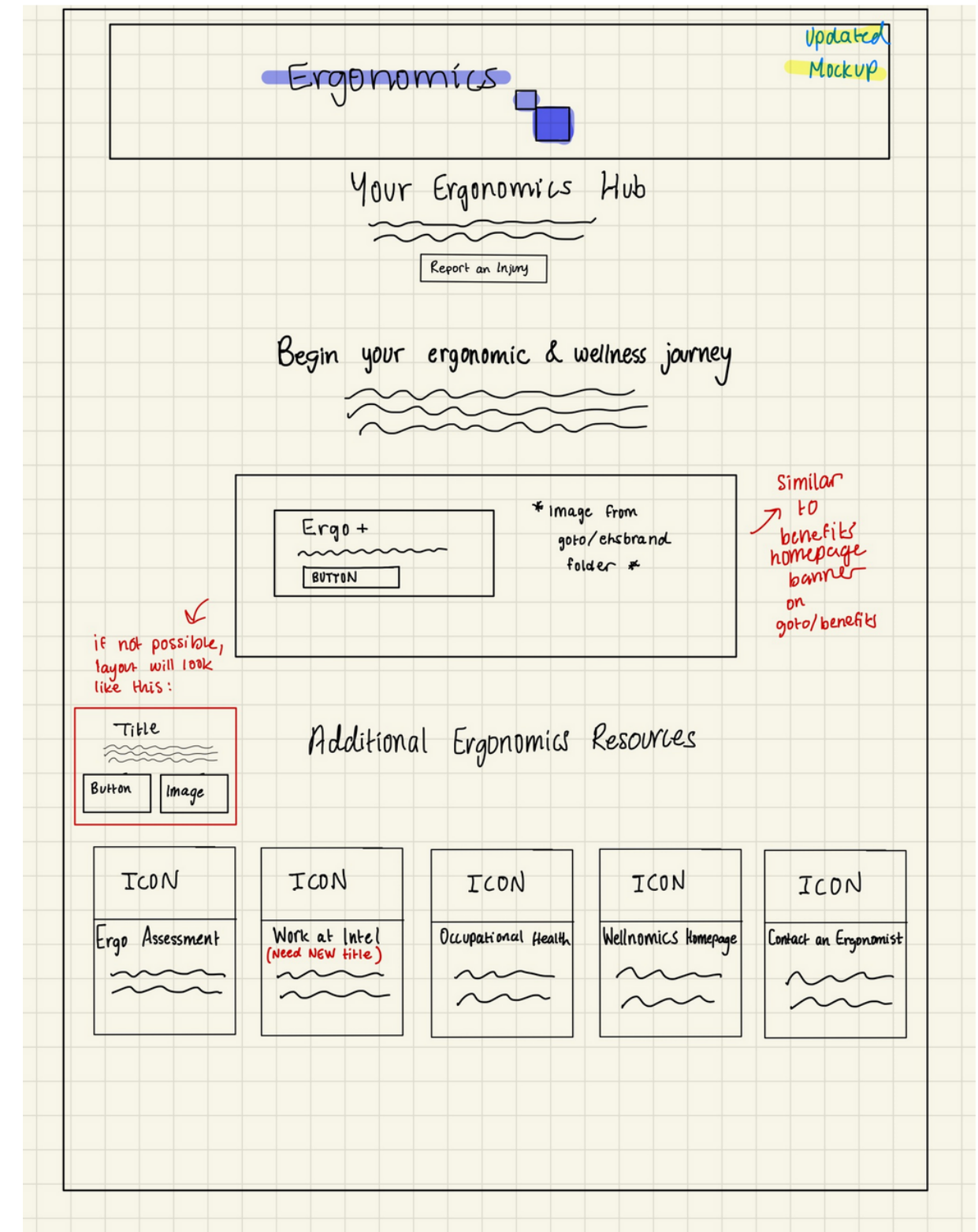
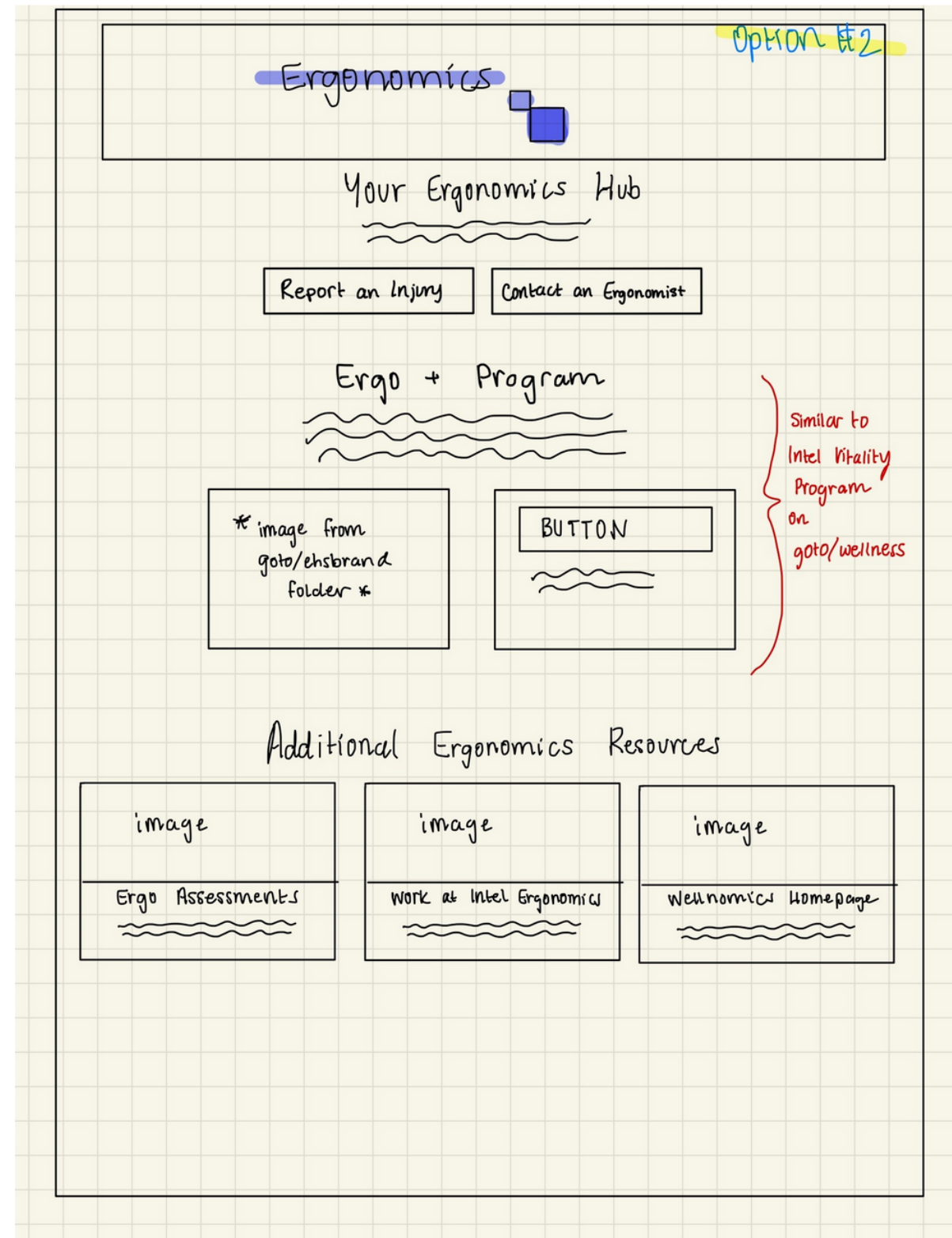
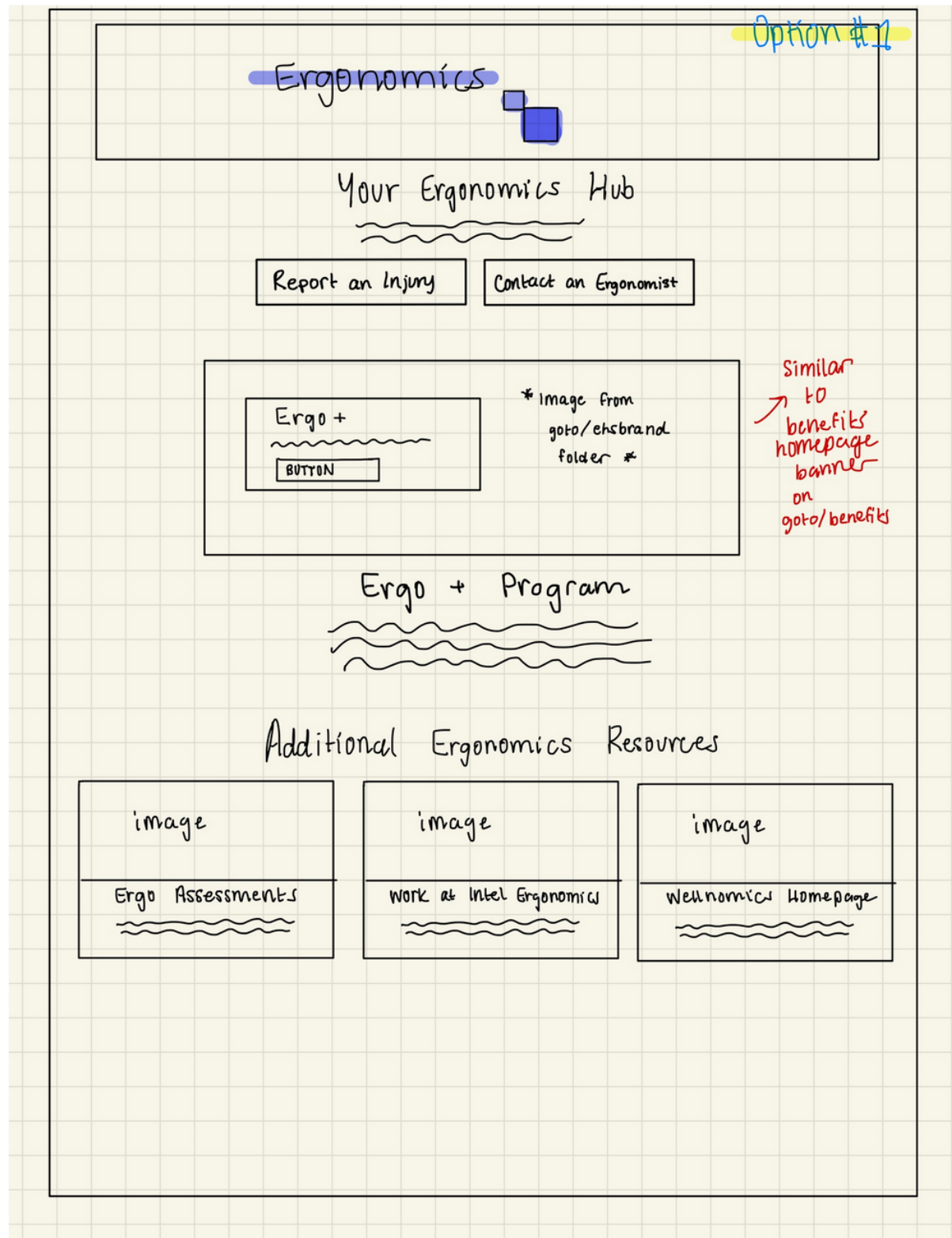


ASSET
DESIGN

Communi-TEA 
Chat With Patrice

Communi-TEA 
Chat With Patrice

**ASSET
DESIGN**



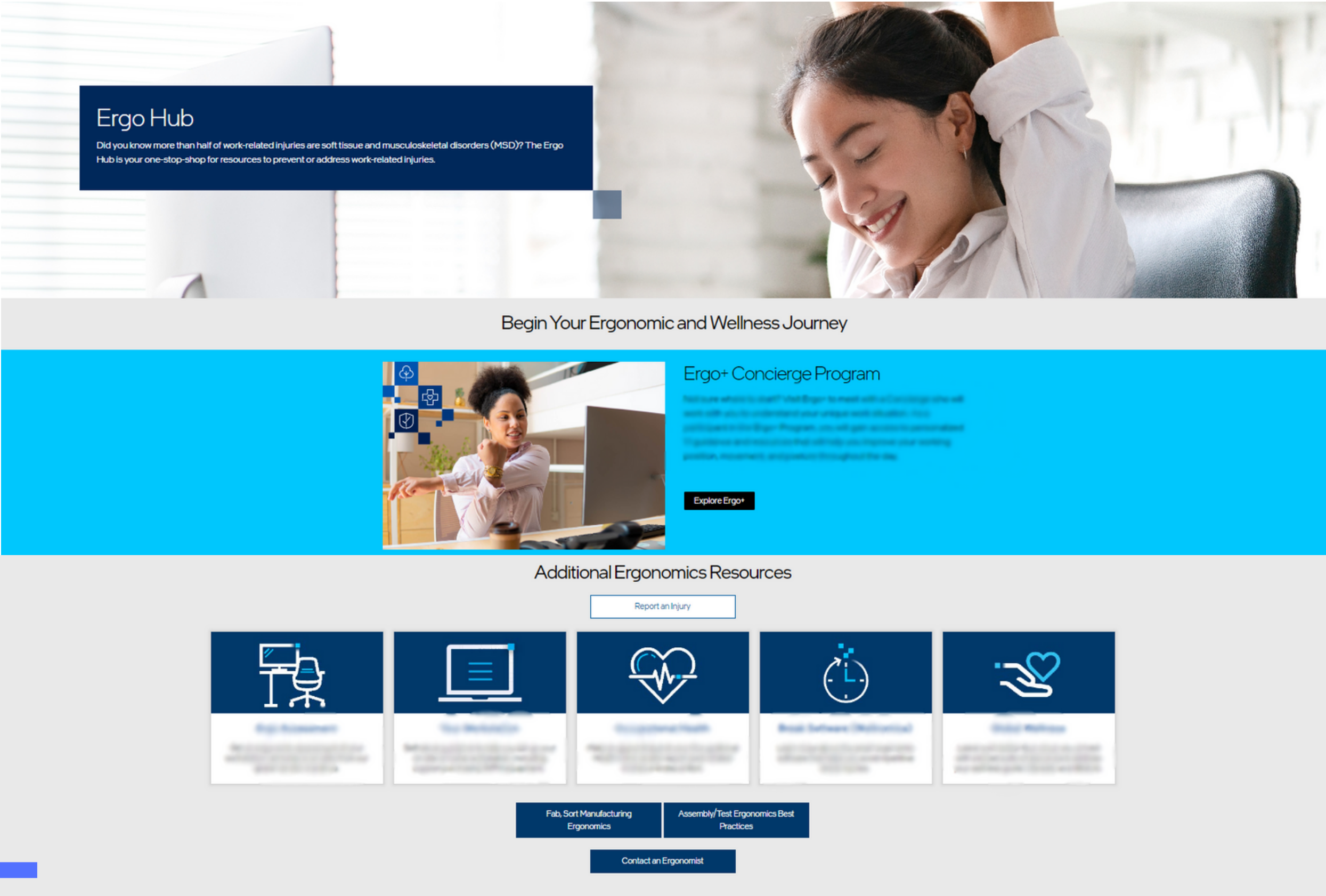
UX RE-DESIGN

I was also in charge of the complete revision and redesign of Intel's Ergonomics Resources, a touchpoint that would be visible to every employee.

The 1st phase included rough mockups I made of where components would go and the intentions behind resource placement. These involve different iterations based on feedback I received from various stakeholders.

Icons designed by
me in Adobe
Illustrator.

UX RE- DESIGN



Next I brought the finalized mockups to life by using Adobe Experience Manager (AEM) to properly display resources and introduce the new branding for EHS. Ultimately, this website made it easier for employees to locate key resources from what it was before (a laundry list of hyperlinks).